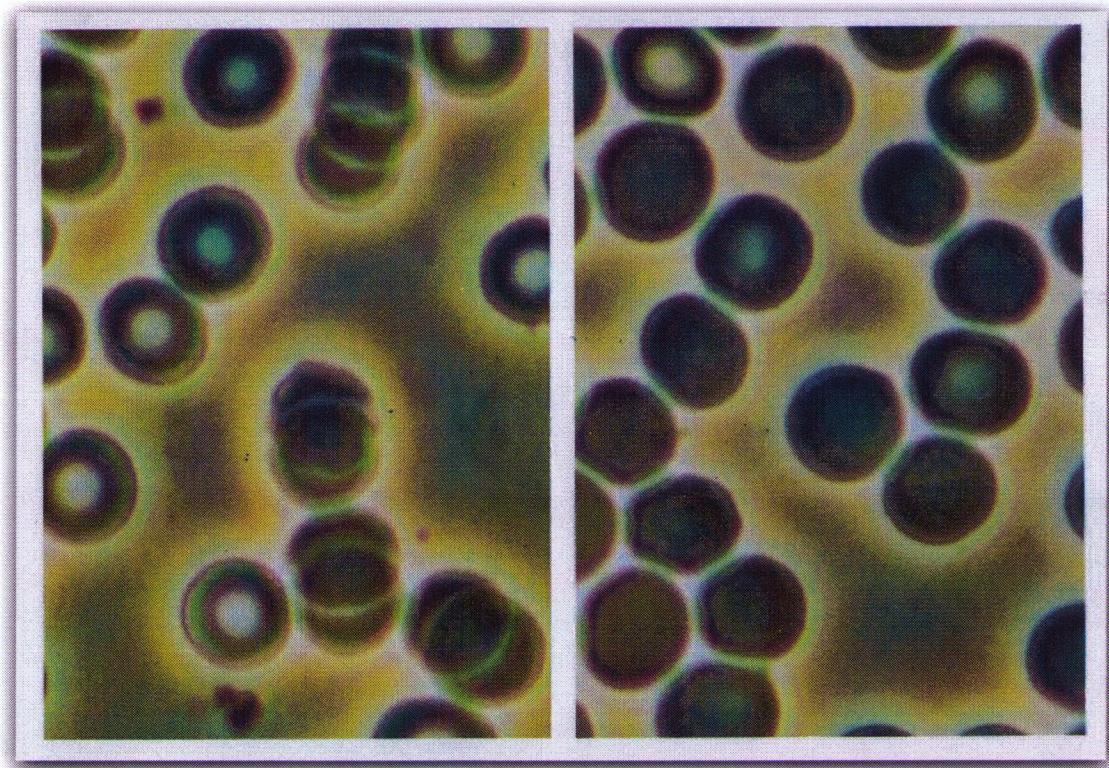


## Double Helix Water Live Blood Analysis 20 Minute Test

These images were sent in to us by a practitioner from Naples Florida, who recently performed a live blood test with Double Helix Water. This is the blood from a 44 year old female who has been in poor health for over 10 years presumably with undetermined auto-immune issues.



**BEFORE**

**AFTER**

The before picture (on the left) shows irregularly shaped red blood cells that are 'stacked' together. Also, the white shaded areas in the center of the cells are indications of weak and deflated unhealthy red blood cells. The primary job of red blood cells is to transport oxygen throughout the body. When they can't float freely, due to being stacked together, they can't perform this job properly which can result in illness and disease.

The after picture (on the right) was taken just **20 minutes** after drinking 3 drops of **Double Helix Water** diluted in Distilled water. As you can see, the red blood cells have taken on a more consistent round, plump appearance and they are no longer stuck together; they are now moving freely. The white shaded area in the center of the cells which indicate weak and deflated cells have also decreased dramatically.